



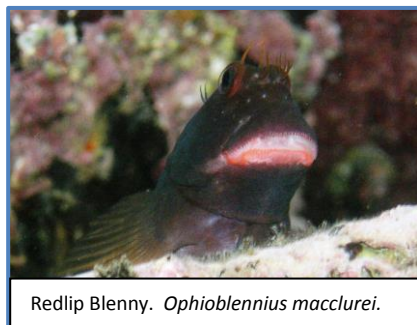
Area 1.

Snorkellers Guide to Marine Life at Anse Chastenet

prepared by
Dr. Nigel Thomas



Area 5.



Redlip Blenny. *Ophioblennius macclurei*.

Anse Chastenet St. Lucia



Elkhorn Coral. *Acropora palmata*.

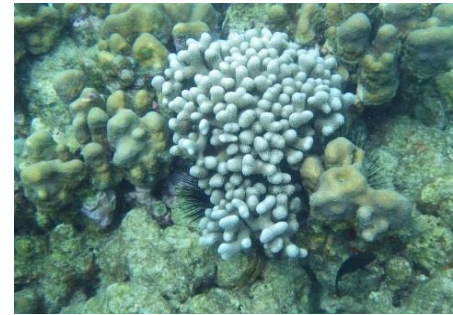
This guide is intended to let you know about some of the many marine species you can see in the waters off Anse Chastenet.

The first point, however, is **your safety**. Snorkelling is safe in all locations within the marked buoys and to the north of the bay (Areas 5-7). However please remain vigilant with respect to vessel activity which can get very busy to the south of the bay (Area 3). It is recommended that you do not swim beyond the buoys at the southern headland.

The species you can see have been grouped together into different types, with an indication of where you can best see them. Nearly all of these images were collected while snorkelling at Anse Chastenet in 2014, so you should be able to see most of them yourself.

All **common names** are in bold while *Latin* are in italic. An indication of size is given: **L** = Large, **M** = Medium, **S** = Small and **V** = Very. ☒ = Don't touch! **1, 2, 3, etc.** indicates where you are most likely to see them. **A** = all sites. **?** = species name unsure!

Coral and coral like species. Included within this group are stony corals, soft corals, fire corals and sponges



Branched Finger Coral *Porites furcata*. S-M, 1-2. Surrounded by Star Coral *Monastrea* sp.



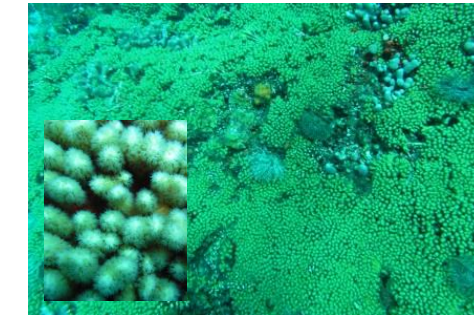
Symmetrical Brain Coral *Diploria strigosa*. M-L, 1-2.



Elkhorn Coral. *Acropora palmata*. M-L, 1-2



Massive Starlet Coral. *Sidastrea siderea*. M-L, 1-2.



Yellow Pencil Coral. *Madracis mirabilis*. M-L, 2



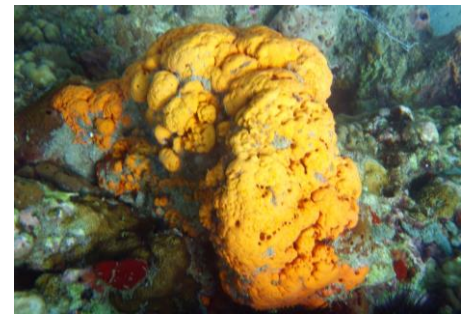
Mountainous Star Coral. *Montastrea faveolata*. L, 1



Blade Fire Coral. *Millepora complanata*. S-M, 1-3 and 5-7, ☒



Fire coral in proximity to a bright red Erect Rope Sponge. ?*Amphimedon compressa*. S-M, 3.



Orange Elephant Ear Sponge. *Agelas clathrodes*. M, 1 & 2.



Green Finger Sponge. *Iotrochota birotulata*. M, 3.



Yellow Tube Sponge. *Aplysina fistularis*. M-L, 1-3 and 5-7



Venus Sea Fan. *Gorgonia flabellum*. M-L, 1 and 5-7.



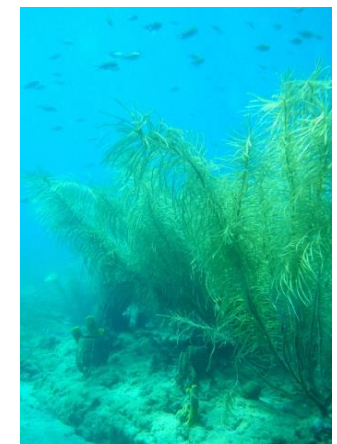
Interwoven with the Green Finger Sponge is the Golden Zoanthid. *Parazoanthus swifti*. VS, 3.



Giant Barrel Sponge. *Xestospongia muta*. L-VL, 1-3 and 7



Porous Sea Rod. *Pseudoplexaura* spp. M-L, 5-7



Sea Plumes. *Pseudopterogorgia* spp. L-VL, 6 and 7.

Fish species. May be found in shoals (Sh), swimming singly/pairs/small groups (Si) in open water (Ow), associated with sea grass (Sg), sand (Sa) or reef features (Rf), sometimes hidden (H) as well as fast moving in shallow water (Sw).



Cero. *Scomberomorus regalis*. M-L. 1. Si, Ow



Houndfish. *Tylosurus crocodilus*. M-L. 1-3. Si & Sh, Ow



Chub. *Kyphosus* spp. M. 1. Sh, Ow



Blue Tang. *Acanthurus coeruleus*. M. 1-3. Si-Sh, Rf. Shoals with Surgeon and Doctorfish.



French Angelfish (juvenile form) . *Pomacanthus paru*. S-M, 1, 2. Si, Rf



White spotted Filefish. *Cantherhines macrocerus*. S-M. 3,4. Si, Sg, Rf.



Yellowfin Mojarra. *Gerres cinereus*. S-M. 3-5. Si, Sa, Sw



Seargeant Major. *Abudefduf saxatilis*. S. 2,3 & 5-7. Sh & Si, Rf



Brown Chromis. *Chromis multilineata*. VS-S. 1-3, 5-7. Sh, Ow & Rf



French Grunt. *Haemulon flavolineatum*. M. 2, 3, 6, 7. Sh, Rf.



Banded Butterflyfish. *Chaetodon striatus*. S. 1-3 & 5-7. Si, Rf. Frequently in pairs



Glassy Sweeper. *Pemphris schomburgki*. S. 1 & 2 in caves. Sh, Rf



The introduced Lion fish, *Pteriosis* sp. S-M. 2. Si, Rf, T. ☹️



Sand Diver. *Synodus intermedius*. S-M. 2 & 3. Si, Sa near Rf.



Well camouflaged Spotted Scorpionfish. *Scorpaena plumieri*. S-M. 2 & 3, 5-7. Si, Sa, Rf. ☹️

Invertebrates, including Crustacea, Mollusca, Echinodermata and Polychaeta.



Caribbean Spiny Lobster. *Palinurus argus*. S-M. 2, 3. Hides in caves and recesses.



Flamingo Tongue. *Cyphoma gibbosum*. S. 1 & 6. Graze on Sea Fans.



Common Octopus. *Octopus vulgaris*. S-M. 3. Pictured attacking a giant worm *Eunice aphroditois*.



Peacock Flounder, *Bothus lunatus*. M. 2-5. Si, Sg, Sa, Rf.



Ballonfish. *Diodon holocanthus*. S-M. 3-5. Si, Sg, Rf, H. Note iridescent specs in the eyes.



Smooth Trunkfish. *Lactophrys triqueter*. S-M. 2, 3, 5-7. Si, Rf.



Long-spined Urchin. *Diadema antillarum*. S. 2.



Furry Sea Cucumber. *Astichopus multifidus*. S-M. 2-4.



West Indian Sea Egg. *Tripneustes ventricosus*. S. 3 & 5-7. Camouflaged with algae



Trumpetfish. *Aulostomus maculatus*. M. 3, 5-7. Si, Rf, H. Often hides amongst Sea Rods



Porcupinefish. *Diodon hystrix*. M-L. 1. Si, Rf, H. Prefers caves and overhangs



Spotted Moray. *Gymnothorax moringa*. S-L. 1 & 2. Si, Rf. H.



Social Feather Duster. *Bispira brunnea*. S. 3.



Christmas Tree Worm. *Spirobranchus giganteus*. VS, 2,3 & 5,6.



Bearded Fireworm. *Hermidoce carunculata*. S. 3, 5 & 6 ☹️